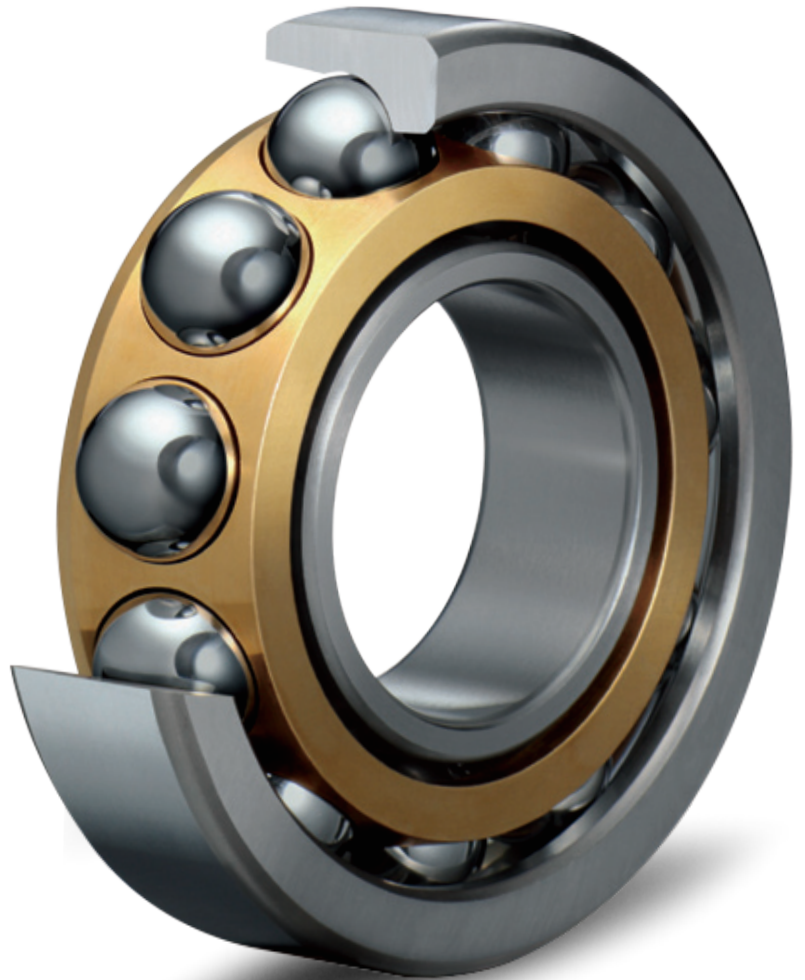
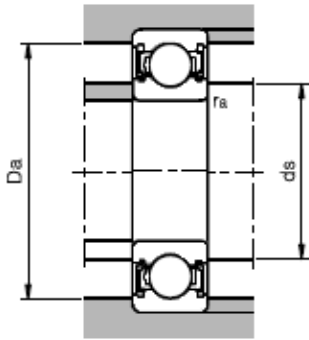


TURNUP



ANGULA CONTACT BALL BEARING

71900C(E)-...-P4S Series 2(3)MM9300WI Series

Bearing Number 15° C/2 ⁽³⁾ or 25° E/3 ⁽⁴⁾	Bore d	O.D. D	Width ⁽¹⁾ C	Ball Qty. x Dia.	Bearing Wt.	15° (C/2) Load Ratings			25° (E/3) Load Ratings			Grease Capacity ⁽²⁾	
						Static C _o	Dynamic C _e	Speed Rating ^(Ng)	Static C _o	Dynamic C _e	Speed Rating ^(Ng)	10%	15%
						N			RPM			g	
71900 9300WI	10 -4	22 -5	6 -40	12 x 3.2 12 x 1/8	0.01	1640	3510	77500	1580	3380	69800	0.04	0.06
71901 9301WI	12 -4	24 -5	6 -80	13 x 3.2 13 x 1/8	0.01	1840	3690	67200	1770	3550	66500	0.05	0.07
71902 9302WI	15 -4	28 -5	7 -80	13 x 3.6 13 x 9/64	0.02	2370	4560	55600	2280	4360	50000	0.08	0.12
71903 9303WI	17 -4	30 -5	7 -80	14 x 3.6 14 x 9/64	0.02	2800	4970	50100	2680	4740	45100	0.08	0.12
71904 9304WI	20 -5	37 -6	9 -120	14 x 4.8 14 x 3/16	0.04	4560	8080	42100	4360	7700	41600	0.17	0.25
71905 9305WI	25 -5	42 -6	9 -120	17 x 4.8 17 x 3/16	0.04	5750	9040	34800	5470	8590	31300	0.20	0.29
71906 9306WI	30 -5	47 -6	9 -120	19 x 4.8 19 x 3/16	0.05	6610	9540	29700	6270	9040	26700	0.23	0.34
71907 9307WI	35 -6	55 -7	10 -120	19 x 5.6 19 x 7/32	0.08	9020	12600	25400	8530	11600	22900	0.34	0.51
71908 9308WI	40 -6	62 -7	12 -120	19 x 6.4 19 x 1/4	0.11	11700	16000	22400	11100	15100	20200	0.54	0.80
71909 9309WI	45 -6	68 -7	12 -120	21 x 6.4 21 x 1/4	0.13	13200	16800	20000	12500	15900	18,000	0.59	0.88
71910 9310WI	50 -6	72 -7	12 -120	23 x 6.4 23 x 1/4	0.14	14600	17600	18300	13800	16600	16500	0.64	0.95
71911 9311WI	55 -7	80 -7	13 -150	23 x 7.1 23 x 9/32	0.19	18500	21800	16600	17400	20600	14900	0.85	1.30
71912 9312WI	60 -7	85 -8	13 -150	25 x 7.1 25 x 9/32	0.2	20200	22700	15300	19000	21400	13800	0.90	1.40
71913 9313WI	65 -7	90 -8	13 -150	27 x 7.1 27 x 9/32	0.22	21900	23600	14200	20400	22200	12800	0.95	1.40
71914 9314WI	70 -7	100 -8	16 -150	24 x 8.7 24 x 11/32	0.34	29000	32000	13100	27300	30200	11800	1.60	2.40
71915 9315WI	75 -7	105 -8	16 -150	25 x 8.7 25 x 11/32	0.36	30300	32500	12300	28400	30600	11100	1.70	2.50
71916 9316WI	80 -7	110 -8	16 -150	27 x 8.7 27 x 11/32	0.39	32700	33800	11600	30500	31900	10400	1.75	2.70
71917 9317WI	85 -8	120 -8	18 -200	26 x 9.5 26 x 3/8	0.56	37500	38700	10800	35000	36500	9700	2.40	3.60
71918 9318WI	90 -8	125 -9	18 -200	26 x 10.3 26 x 13/32	0.57	44000	45000	10300	41200	42400	9300	2.60	3.90
71919 9319WI	95 -8	130 -9	18 -200	28 x 10.3 28 x 13/32	0.6	47400	46800	9800	44200	44100	8800	2.70	4.10
71920 9320WI	100 -8	140 -9	20 -200	29 x 10.3 29 x 13/32	0.85	48800	47200	9100	45500	44400	8200	3.35	5.00
71922 9322WI	110 -8	150 -9	20 -200	31 x 10.3 31 x 13/32	0.92	51700	48400	8400	48200	45600	7600	3.65	5.40
71924 9324WI	120 -8	165 -10	22 -200	30 x 11.9 30 x 15/32	1.24	66900	62000	7700	62300	58300	6900	4.95	7.40
71926 9326WI	130 -10	180 -10	24 -250	30 x 13.5 30 x 17/32	1.65	86400	78500	7100	80500	73900	6400	6.50	9.70
71928 9328WI	140 -10	190 -10	24 -250	32 x 13.5 32 x 17/32	1.75	91600	80700	6600	85400	76000	5900	6.90	10.40

^(Ng) For a single, grease-lubricated, spring-preloaded bearing. This value to be used in permissible operating speed (Sp) calculation.

⁽¹⁾ Width tolerance of preloaded bearing set +0.000/-0.254 mm (+0.0000/-0.0100 in.).

⁽²⁾ Fill weights based upon specific gravity of 0.99.

⁽³⁾ C is ISO designation for 15° contact angle, 2 is Turnup designation for 15° contact angle.

⁽⁴⁾ E is ISO designation for 25° contact angle, 3 is Turnup designation for 25° contact angle.

7000C(E)-...-P4S Series 2(3)MM9100WI Series

Bearing Number 15° C/2 ⁽³⁾ or 25° E/3 ⁽⁴⁾	Bore d	O.D. D	Width ⁽¹⁾ C	Ball Qty. x Dia.	Bearing Wt.	15° (C/2) Load Ratings			25° (E/3) Load Ratings			Grease Capacity ⁽²⁾	
						Static C ₀	Dynamic C ₀	Speed Rating ^(Ng)	Static C ₀	Dynamic C ₀	Speed Rating ^(Ng)	10%	15%
						mm Tolerance: 0 to -µm		mm in.	kg	N	RPM	N	RPM
7000 9100WI	10 -4	26 -5	8 -40	8 x 4.8 8 x 3/16	0.018	2200	5400	68500	2100	5300	61700	0.10	0.20
7001 9101WI	12 -4	28 -5	8 -80	10 x 4.8 10 x 3/16	0.02	2900	6400	57300	2800	6200	51600	0.10	0.20
7002 9102WI	15 -4	32 -6	9 -80	12 x 4.8 12 x 3/16	0.03	3600	7300	48600	3530	7020	43700	0.15	0.20
700 9103WI	17 -4	35 -6	10 -80	11 x 4.8 11 x 3/16	0.038	3400	6800	43100	3300	6600	38800	0.20	0.30
7004 9104WI	20 -5	42 -6	12 -120	11 x 6.4 11 x 1/4	0.067	6000	11600	37100	5700	11100	33400	0.35	0.50
7005 9105WI	25 -5	47 -6	12 -120	13 x 6.4 13 x 1/4	0.077	7400	12900	30900	7100	12300	27800	0.40	0.60
7006 9106WI	30 -5	55 -7	13 -120	14 x 7.1 14 x 9/32	0.113	10300	16800	25500	9900	16000	23000	0.55	0.80
7007 9107WI	35 -6	62 -7	14 -120	15 x 7.9 15 x 5/16	0.151	13700	21200	22600	13000	20200	20300	0.75	1.10
7008 9108WI	40 -6	68 -7	15 -120	16 x 7.9 16 x 5/16	0.187	14900	21900	19900	14200	20800	17900	0.90	1.40
7009 9109WI	45 -6	75 -7	16 -120	17 x 8.7 17 x 11/32	0.24	19300	27000	17900	18300	25600	16100	1.10	1.70
7010 9110WI	50 -6	80 -7	16 -120	18 x 8.7 18 x 11/32	0.258	20800	27900	16300	19700	26300	14700	1.25	1.90
7011 9111WI	55 -7	90 -8	18 -150	18 x 10.3 18 x 13/32	0.383	28600	37800	14700	27200	35900	13200	1.75	2.70
7012 9112WI	60 -7	95 -8	18 -150	19 x 10.3 19 x 13/32	0.409	30500	38800	13600	33200	36900	12200	1.90	2.80
7013 9113WI	65 -7	100 -8	18 -150	20 x 10.3 20 x 13/32	0.435	32600	39800	12700	31000	37700	11400	2.00	3.00
7014 9114WI	70 -7	110 -8	20 -150	19 x 11.9 19 x 15/32	0.604	40700	50300	11700	38800	47600	10500	2.80	4.20
7015 9115WI	75 -7	115 -9	20 -150	20 x 11.9 20 x 15/32	0.638	43500	51600	11000	41200	48900	9900	2.95	4.40
7016 9116WI	80 -8	125 -9	22 -200	20 x 13.5 20 x 17/32	0.859	55200	64900	10300	52500	61400	9300	3.85	5.80
7017 9117WI	85 -8	130 -9	22 -200	21 x 13.5 21 x 17/32	0.901	58700	66700	9700	55600	63200	8700	4.05	6.00
7018 9118WI	90 -8	140 -9	24 -200	20 x 15.1 20 x 19/32	1.17	68900	79600	9200	65800	75200	8,300	5.20	7.80
7019 9119WI	95 -8	145 -9	24 -200	21 x 15.1 21 x 19/32	1.222	73400	81400	8700	69400	77400	7800	5.45	8.10
7020 9120WI	100 -8	150 -10	24 -200	22 x 15.1 22 x 19/32	1.299	77400	83600	8300	73400	79200	7500	5.40	8.10
7021 9121WI	105 -8	160 -10	26 -200	21 x 16.7 21 x 21/32	1.617	89400	97900	7900	84500	92100	7100	7.05	10.60
7022 9122WI	110 -8	170 -10	28 -200	22 x 17.5 22 x 11/16	2.043	102700	109400	7500	97400	103200	6800	8.40	12.60
7024 9124WI	120 -8	180 -10	28 -200	23 x 17.5 23 x 11/16	2.18	108500	111200	6900	103200	105000	6200	9.10	13.70
7026 9126WI	130 -10	200 -11	33 -250	21 x 20.6 21 x 13/16	3.273	137000	143200	6400	129900	135700	5800	14.10	21.10

^(Ng) For a single, grease-lubricated, spring-preloaded bearing. This value to be used in permissible operating speed (Sp) calculation.

⁽¹⁾ Width tolerance of preloaded bearing set +0.000/-0.254 mm (+0.0000/-0.0100 in.).

⁽²⁾ Fill weights based upon specific gravity of 0.99.

⁽³⁾ C is ISO designation for 15° contact angle, 2 is Turnup designation for 15° contact angle.

⁽⁴⁾ E is ISO designation for 25° contact angle, 3 is Turnup designation for 25° contact angle.

7200C(E)-...-P4S Series 2(3)MM200WI Series

Bearing Number 15° C/2 ⁽³⁾ or 25° E/3 ⁽⁴⁾	Bore d	O.D. D	Width ⁽¹⁾ C	Ball Qty. x Dia.	Bearing Wt.	15° (C/2) Load Ratings			25° (E/3) Load Ratings			Grease Capacity ⁽²⁾	
						Static C ₀	Dynamic C _e	Speed Rating ^(Ng)	Static C ₀	Dynamic C _e	Speed Rating ^(Ng)	10%	15%
						mm Tolerance: 0 to -µm			mm in.	kg	N	RPM	N
7200	10	30	9	8 x 5.56	0.03	2900	7100	62800	2800	6900	56500	0.14	0.20
200WI	-4	-5	-40	8 x 7/32									
7201	12	32	10	9 x 5.95	0.036	3800	8760	56700	3700	8500	51000	0.17	0.25
201WI	-4	-6	-80	9 x 15/64									
7202	15	35	11	10 x 5.95	0.044	4500	9580	47800	4400	9250	43000	0.22	0.32
202WI	-4	-6	-80	10 x 15/64									
7203	17	40	12	10 x 6.75	0.064	5900	12000	41900	5600	11600	37700	0.30	0.45
203WI	-4	-6	-80	10 x 17/64									
7204	20	47	14	10 x 7.94	0.103	8100	16100	35700	7700	15500	32100	0.48	0.72
204WI	-5	-6	-130	10 x 5/16									
7205	25	52	15	12 x 7.94	0.127	10200	18400	29800	9800	17600	26800	0.59	0.88
205WI	-5	-7	-130	12 x 5/16									
7206	30	62	16	12 x 9.53	0.195	14700	25500	25100	14000	24400	22600	0.87	1.31
206WI	-5	-7	-130	12 x 3/8									
7207	35	72	17	12 x 11.11	0.282	20000	33700	21600	19100	32200	19400	1.22	1.82
207WI	-6	-7	-130	12 x 7/16									
7208	40	80	18	11 x 12.70	0.352	23800	40400	19300	22700	38700	17400	1.66	2.49
208WI	-6	-7	-130	11 x 1/2									
7209	45	85	19	13 x 12.7	0.408	28800	45200	17500	27600	43100	15800	1.85	2.77
209WI	-6	-8	-130	13 x 1/2									
7210	50	90	20	14 x 12.70	0.457	31700	47400	16000	30200	45200	14400	2.15	3.20
210WI	-6	-8	-130	14 x 1/2									
7211	55	100	21	14 x 14.29	0.608	40000	58700	14500	38500	55900	13100	2.70	4.10
211WI	-7	-8	-150	14 x 9/16									
7212	60	110	22	14 x 15.88	0.787	48900	71000	13200	47100	67700	11900	3.35	5.00
212WI	-7	-8	-150	14 x 5/8									
7213	65	120	23	14 x 16.67	0.998	54700	77400	12100	52500	73700	10900	4.05	6.10
213WI	-7	-8	-150	14 x 21/32									
7214	70	125	24	14 x 17.46	1.074	60000	84200	11400	57400	80200	10300	4.70	7.00
214WI	-7	-9	-150	14 x 11/16									
7215	75	130	25	15 x 17.46	1.174	64900	87900	10800	62300	83700	9700	5.15	7.80
215WI	-7	-9	-150	15 x 11/16									
7216	80	140	26	15 x 19.05	1.448	77000	102900	10100	73800	98000	9100	6.10	9.20
216WI	-7	-9	-150	15 x 3/4									
7217	85	150	28	15 x 20.64	1.817	90700	118900	9400	85800	113300	8500	7.55	11.30
217WI	-8	-9	-200	15 x 13/16									
7218	90	160	30	14 x 22.23	2.196	97900	129900	8900	92500	123700	8000	9.55	14.40
218WI	-8	-10	-200	14 x 7/8									
7219	95	170	32	14 x 23.81	2.669	111200	147100	8400	106800	140100	7600	11.50	17.30
219WI	-8	-10	-200	14 x 15/16									
7220	100	180	34	14 x 25.4	3.209	126800	165200	8000	120100	15500	7200	13.65	20.50
220WI	-8	-10	-200	14 x 1									
7222	110	200	38	14 x 28.58	4.486	160100	194900	7200	153500	185800	6500	18.80	28.20
222WI	-8	-11	-200	14 x 1 1/8									

^(Ng) For a single, grease-lubricated, spring-preloaded bearing. This value to be used in permissible operating speed (Sp) calculation.

⁽¹⁾ Width tolerance of preloaded bearing set +0.000/-0.254 mm (+0.0000/-0.0100 in.).

⁽²⁾ Fill weights based upon specific gravity of 0.99.

⁽³⁾ C is ISO designation for 15° contact angle, 2 is Turnup designation for 15° contact angle.

⁽⁴⁾ E is ISO designation for 25° contact angle, 3 is Turnup designation for 25° contact angle.

TURNUP